



MATERIALS LIST



- diecut pattern (purchased from carinagardner.com or silhouetteamerica.com (cut on a 12" x 24" mat)

- 5 inch strip 3/8 inch elastic

SUPPLY LIST

- diecutting machine
- sewing machine
- thread
- scissors
- seam ripper

LEGEND

 fabric right-side
 fabric wrong-side

CUTTING TIPS

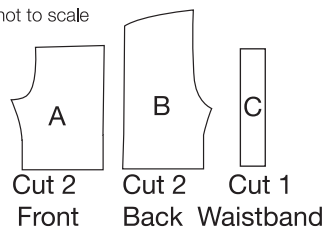
Make sure that the square in the top-right hand corner of your cutting file is exactly 1" x 1". If it is not, select all of the files, hold down your Shift Key, and resize everything until the square is 1" x 1".

18 INCH DOLL BASIC PANTS DIECUT PATTERN INSTRUCTIONS

illustrations not to scale

1. Cut Out Your Diecut

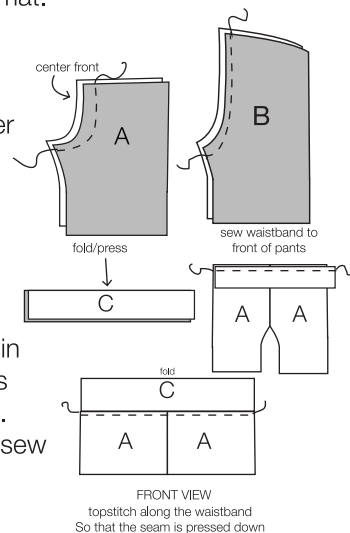
Cut out the diecut with your machine using the Sewable Fabric Interfacing (purchased at your local craft shop or at silhouetteamerica.com). Use the instructions on the package to prepare for cutting. You will need to cut out 2 Pants Front pieces, 2 Short Back pieces, and 1 Waistband piece. It is recommended to cut out this pattern on the 12" x 24" mat.



2. Sew Center Front of the Pants

With right-sides together, sew the center front seam of the Pants Front (A). Then with right-sides together, sew together the center front seam of the Pants Back (B).

Optional: Serge seams.



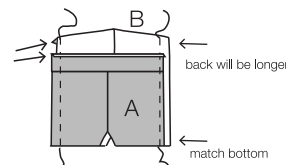
3. Sew on the Waistband

Fold and press in half lengthwise the Waistband (C) with right-sides out and wrong-sides facing each other. Then pin the raw edge of the Waistband to the top edge of the Pants Front (A-A). Press Waistband up and press the seam down. Stitch-in-the-ditch or topstitch just below the waistband to sew the seam down.

FRONT VIEW
topstitch along the waistband
So that the seam is pressed down

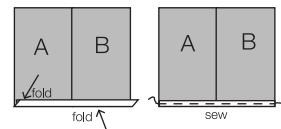
4. Sew the Side Seams

With right-sides together and matching leg bottoms, sew the Pants Front to the Pants Back at the sides. Please note, the Back (B) of the Pants should extend above the Pants Front by about 3/4-1".



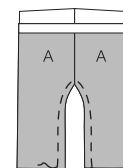
5. Hem

Open up the bottom of the pants and fold 1/4" twice to create the hem. Sew into place. Optional: Serge the bottom edge then fold over 1/4". Repeat with the other leg.



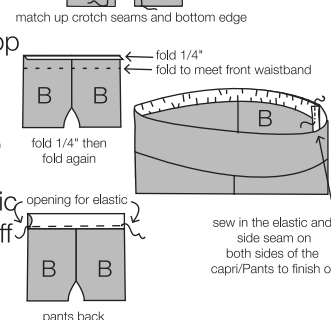
6. Finish the Pants

With right-sides together, sew the Pants Front (A) to Back (B) at the inside leg, matching crotch seams and bottom edges.

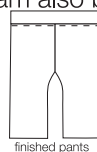


7. Put in the Elastic

Fold 1/4" from the top of the Pants Back (B). Then, fold the top of the Pants Back down so wrong-sides are together. Sew close to the finished edge to form elastic casing. Please note, the elastic will only be inserted in the back of the pants. Then, insert a 5" piece of 3/8" elastic into the back casing. Use a safety pin to help guide it through. Pin and sew down the elastic into the casing with the side seam also being sewn to finish off the edge.



8. Embellish if desired!



DO NOT DUPLICATE
© COPYRIGHT 2013 CARINA GARDNER, INC.

Find Carina Gardner products including dishware, fabric, sewing patterns, design classes, wallpaper, paper, digital scrapbooking, diecuts, and more on her site at www.carinagardner.com