

18 INCH DOLL PANEL INSTRUCTIONS for *primrose garden* by carina gardner

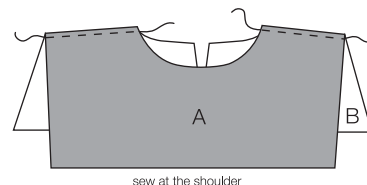
These illustrated instructions coordinate with the Primrose Garden Doll Panel that can be purchased from your local quilt shop. Choose "FIT TO PAGE" when printing these instructions.

LEGEND

□ fabric right side
■ fabric wrong side

DRESS INSTRUCTIONS OPTION 1

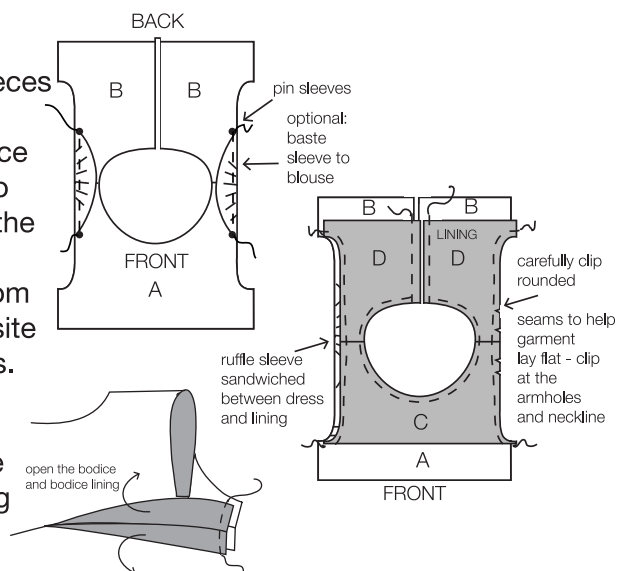
1. With right-sides together, sew the Dress Bodice Front (A) to the Dress Bodice Back Pieces (B) at the shoulder seams. Press seams open. Repeat with the Dress Bodice Front Lining (C) and Dress Bodice Back Lining (D).



2. With wrong-sides together, fold each of the Sleeves (E) in half length-wise. Sew a gathering stitch along the raw edge of each of the sleeves about 1/8" from the edge. Pull the threads to gather.



3. Place the Dress Bodice (A-B) and Dress Bodice Lining (C-D) pieces right-sides together matching the neckline and shoulder seams. Sandwich each sleeve between the Dress Bodice and Dress Bodice Lining in the armhole with the raw edges of the sleeve matching to the raw edges of the Dress Bodice and Lining pieces. Sew along the edge of the armhole to secure the sleeve into place. Then, sew together the Dress Bodice (A-B) and Dress Bodice Lining (C-D) from the center back, around the neckline and back down to the opposite center back. Clip curves and corners in the neckline and armholes. Turn right-side out and press.



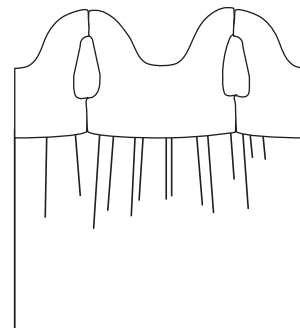
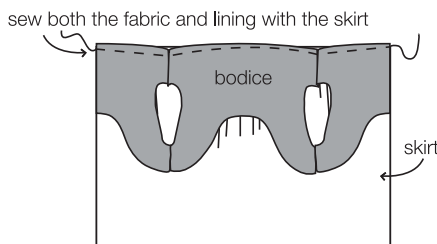
4. For side seams, open the Dress Bodice (A-B) and Dress Bodice Lining (C-D) at the under arm. Place right-sides together, matching seams, and sew into place. Press.

5. Hem the bottom (scallop edge) of the Dress Skirt (F) by folding 1/4" twice along the edge and then sewing into place.



6. Gather the Dress Skirt (F) by sewing two rows of gathering stitches 1/8" and 1/4" respectively along the top edge. Pull the threads to gather.

7. Place the right-sides of the top of the Dress Skirt (F) and bottom of the Dress Bodice (A-B-C-D) together. Fit the gathers to match the length of the Dress Bodice. Leave an extra 1/4" of the Skirt (F) unsewn on either side of the Dress Bodice.



PAGE 1

www.carinagardner.com

THIS PATTERN IS FOR PERSONAL USE ONLY. FOR COMMERCIAL LICENSING OPPORTUNITIES, PLEASE CONTACT: licensing@carinagardner.com.

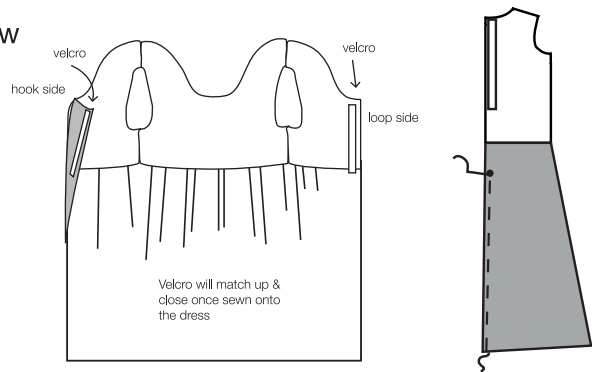
THIS PATTERN'S INFORMATION AND INSTRUCTIONS ARE PRESENTED IN GOOD FAITH. BECAUSE OF THIS, THE PUBLISHER HAS NO CONTROL OVER THE CHOICE OF MATERIALS OR THE CORRECT FOLLOWING OF PROCEDURES. NO WARRANTY IS GIVEN NOR ARE RESULTS GUARANTEED

© 2014 Carina Gardner, Inc.
DO NOT DUPLICATE. NO PART OF THIS PATTERN
MAY BE REPRODUCED IN PRINT OR ELECTRONICALLY.

DRESS INSTRUCTIONS OPTION 1 (CONTINUED)

8. Sew a 3" piece of hook and loop fasteners or buttons and buttonholes to the center backs of the bodice.

9. With right-sides together, place the two unfinished edges of the skirt and sew from the bottom hem to the bodice. (Hint: For a larger opening, stop sewing 1-2" from the top of the skirt. Then fold these unsewn edges 1/8" twice and sew into place. The larger opening makes it easier to manager for younger children.



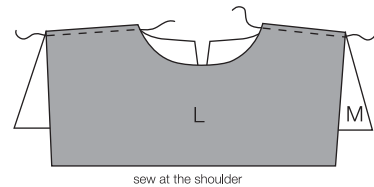
DRESS INSTRUCTIONS OPTION 2

For Option 2, follow the Dress Instructions Option 1 with the following changes:

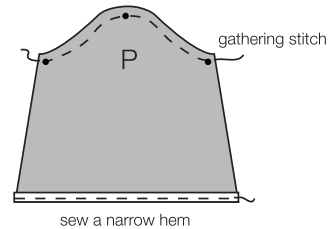
1. Interchange Dress Bodice Front and Dress Bodice Back for Dress Bodice Front Lining and Dress Bodice Back Lining and vice versa.
2. Skip Step #2.
3. Skip instructions for the sleeve in Step #3.

BOLERO INSTRUCTIONS OPTION 1

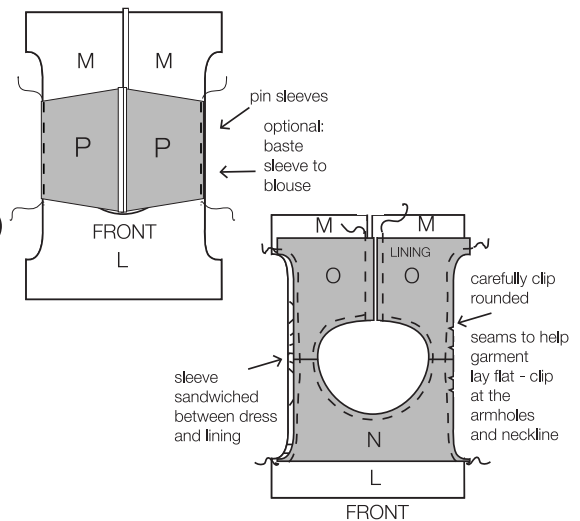
1. With right-sides together, sew the Bolero Front (L) to the Bolero Back Pieces (M) at the shoulder seams. Press seams open. Repeat with the Bolero Front Lining (N) and Bolero Back Lining (O).



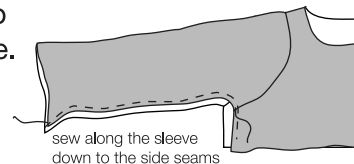
2. Hem the straight edge of the Sleeves (P) by folding 1/4" twice to the wrong-side and sewing into place. Sew a gathering stitch along the curved edge of each of the Sleeves (P) about 1/8" from the edge. Pull the threads to gather.



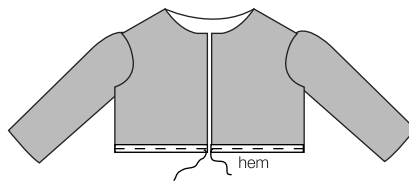
3. Place the Bolero (L-M) and Bolero Lining (N-O) pieces right-sides together matching the neckline and shoulder seams. Sandwich each sleeve between the Bolero and Bolero Lining in the armhole with the raw edges of the sleeve matching to the raw edges of the Bolero and Bolero Lining pieces. Make sure the right-side of the Sleeve (P) fabric faces the right-side of the Bolero (L-M). Sew along the edge of the armhole to secure the sleeve into place. Then, sew together the Bolero (N-O) and Bolero Lining (N-O) from the center back, around the neckline and back down to the opposite center back. Clip curves and corners in the neckline and armholes. Turn right-side out and press.



4. For side seams, place right-sides together of a sleeve. Starting at the hem of the sleeve, sew along the edge all the way down to the side seams of the bolero. Press. Repeat with the other sleeve.



5. Hem the bottom of the bolero by folding 1/4" twice and sewing into place. Press.



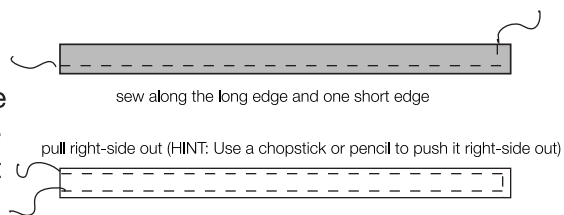
BOLERO INSTRUCTIONS OPTION 2

For Option 2, follow the Bolero Instructions Option 1 with the following changes:

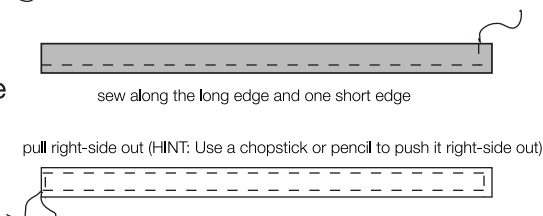
1. Interchange Bolero Front and Bolero Back for Bolero Front Lining and Bolero Back Lining and vice versa.

REVERSIBLE APRON INSTRUCTIONS

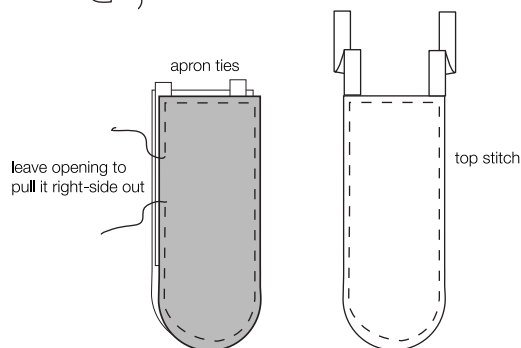
1. Fold Apron Top Ties (H) each in half with right-sides together lengthwise. Sew along the raw edge leaving one of the short sides unsewn. Pull right-side out through the unsewn edge and press flat. Topstitch into place. Repeat with the second Apron Top Tie.



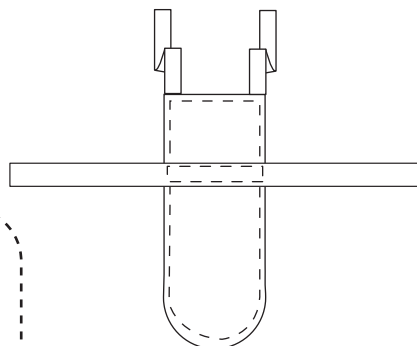
2. Fold Apron Waist Tie (K) in half with right-sides together lengthwise. Sew along the raw edge leaving one of the short sides unsewn. Pull right-side out and press. Fold in the remaining raw edge. Topstitch along all four edges.



3. Place right-sides together of the Apron (I and J). Sandwich the Apron Top Ties (H) between the top of Aprons (I and J) with the raw edge of the ties hanging out and the rest of the ties between the apron. Sew along the edge of the apron leaving about 2" unsewn on one of the straight sides. Pull right-side out. Press. Then fold in the raw edge and topstitch around the edge of the entire apron.



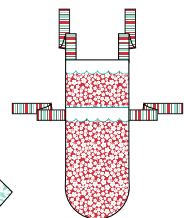
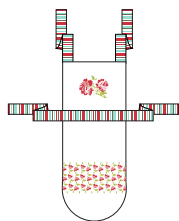
4. Center the Apron Waist Tie (K) about 2 1/2" from the top of the apron to Apron Side 1. Sew along the edges of the tie to secure it to the apron.



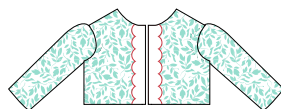
Dress Option 1



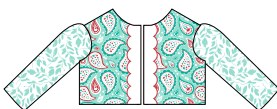
Dress Option 2



Reversible Apron



Bolero Option 1



Bolero Option 2