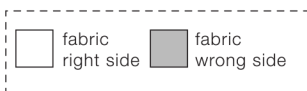


18 INCH DOLL PANEL INSTRUCTIONS for

These illustrated instructions coordinate with the Wiltshire Daisy Doll Panel that can be purchased from your local quilt shop. Choose "FIT TO PAGE" when printing these instructions.

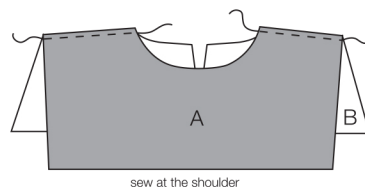
CUT ON THE BLACK LINE
ALL SEAMS ARE 1/4 INCH
SEAMS INCLUDED IN PATTERN

LEGEND

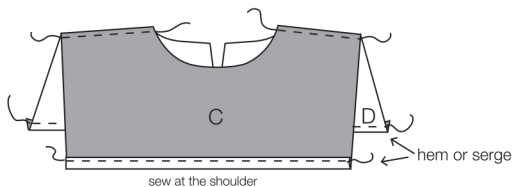


BLOUSE INSTRUCTIONS

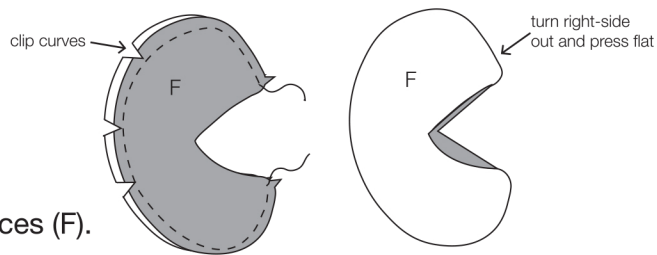
1. With right-sides together, sew the Front Blouse (A) to the two Blouse Backs (B) at the shoulders. Press shoulder seams open or serge (optional).



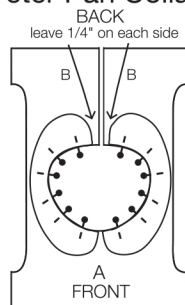
2. With right-sides together, sew the Front Lining (C) with the Back Linings (D) at the shoulders. Press shoulder seams open or serge (optional). Finish the lower raw edges of the linings by serging or by hemming the edge with a single turn.



3. With right-sides together, sew together two pieces of the Peter Pan Collar (F). Using the notches as your guide, start sewing at one notch and end at the other notch to stitch together the longest part of the collar. Leave the small area between the two notches unsewn. Clip along the curves. Turn the collar right-side out and press flat. Repeat with the second two Peter Pan Collar pieces (F).



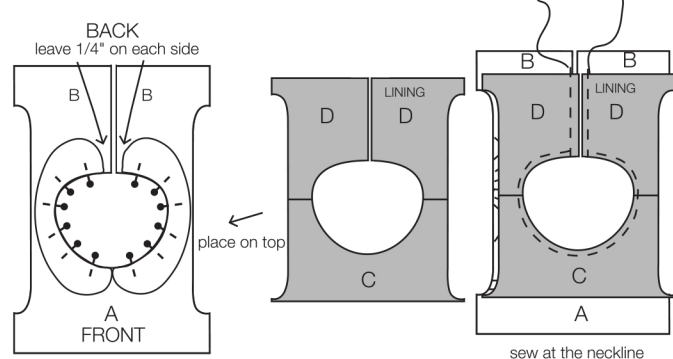
4. Pin the two collar pieces (F) to the right-side of the blouse neckline with raw edges of the Peter Pan C collars (F) matching the raw edge of the blouse neckline (A & B).



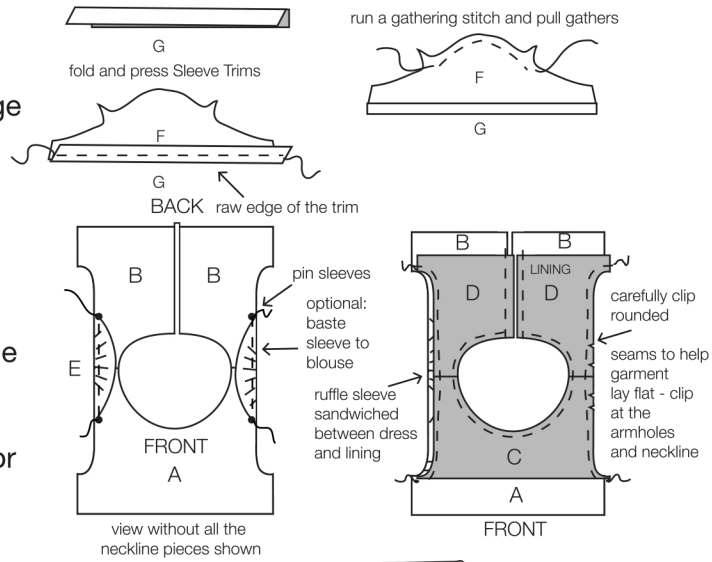
NOTE: Once pinned, you will see that the collar will lay flat by then folding the blouse at the shoulder seams as it would be worn. It will seem a little large in the shoulders when laid flat.

BLOUSE INSTRUCTIONS (CONTINUED)

4. (continued) The two Peter Pan Collar pieces (F) will meet in the center of the Blouse Front (A). Let the collar end 1/4" before the edge of the Blouse Backs (B). With right-sides together, pin the Linings (C-D) to the Blouse (A-B) with the Peter Pan Collars sandwiched in between the Blouse and Blouse Linings. Match the neckline and armholes seams. Begin sewing from the neckline edge of one back lining, around the neck, and up to the other back lining edge. Clip curves and turn right-side out and press. Top stitch the neckline in place. Finally, baste the armholes.

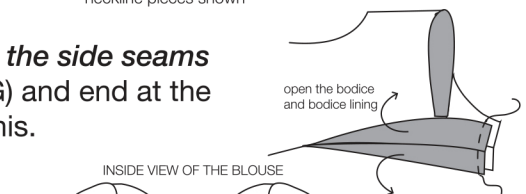


5. With wrong-sides together, fold both of the Sleeve Trims (G) in half lengthwise and press. With right-sides together and matching raw edges, sew one Sleeve Trim (G) to the lower edge of the Sleeve (F) with a 3/8" seam. Fold the Sleeve Trim (G) down and press the seam up. Repeat with second sleeve. Optional: Serge seam. Optional: Topstitch Sleeve Trim to Sleeve.

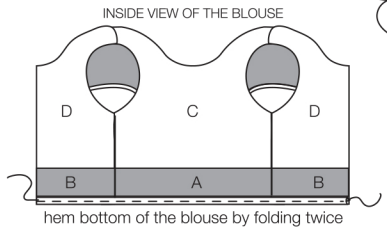


6. At the top of the Sleeve (E), run a gathering stitch between the two notches. With right-sides together, pin the sleeve to the armhole at the shoulder and underarms. Pull gathers to fit making sure the gathers are mostly centered at the shoulder seam. Sew into place. Turn right-side out and press. Repeat for other sleeve.

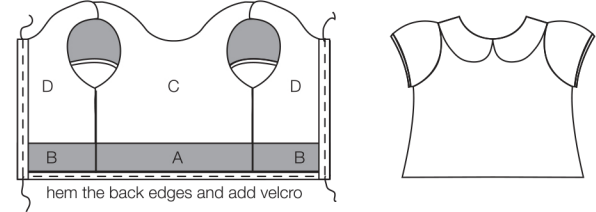
7. With right-sides together, sew the blouse front to the back **at the side seams** matching underarm seams. Start stitching at the sleeve trims (G) and end at the bottom of the blouse. Sew both side seams of the blouse like this.



8. Trim the bottom of the blouse to create a straight edge. Hem the blouse with a narrow 1/8" hem by folding the bottom twice and sewing down. Or serge the edge, fold once, and sew into place.

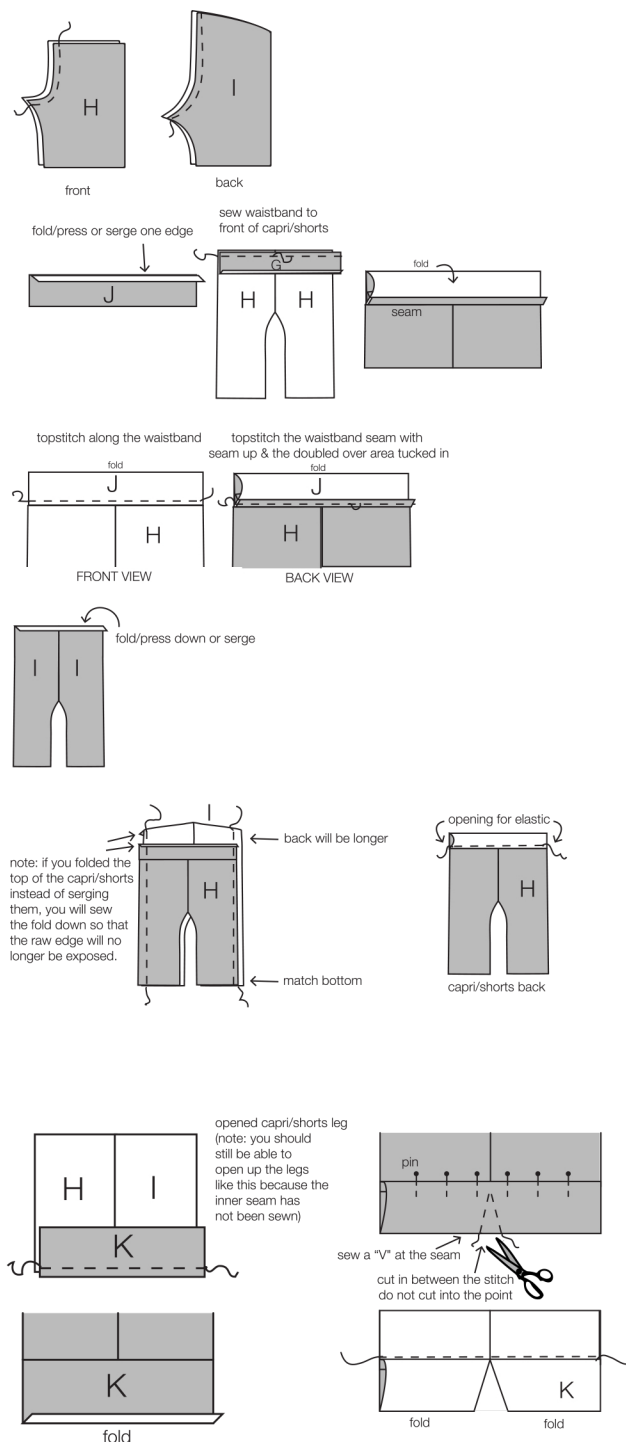


9. Fold back 1/8" or serge the back edges of the blouse on the wrong-side between the linings and the bottom of the blouse. Then fold 1/8" again. Press and sew into place. Attach a 4" strip of Velcro, hook-side to the inside of the back's left-side of the blouse and sew along the edges until Velcro is secured. Attach the loop side to the outside of the back's right-side and sew along the edges until Velcro is secured.



CAPRI INSTRUCTIONS

1. With right-sides together, match the two Front Capris (H) together. Sew along the curved-inside top edge of the capri. Then match right-sides together of the two Back Capris (I). Sew along the curved inside top edge. Press all seams open.
2. Press one long edge of the Waistband (J) under 1/8" or serge. On the opposite long edge, with right-sides together, sew the waistband to the top of the Capri Front (E). Press the seam up.
3. Then fold the Waistband (J) in half so the wrong-sides are together and press. Top stitch the waistband (J) just above where the front (H) and waistband (J) meet. Sew close to the seam line, catching in the serged or folded edge.
4. Finish the raw edge of the Capri Back (I) by either serging or pressing under 1/8". (It is easier to do this at this step than later.)
5. With right-sides together and matching **leg bottoms**, sew the Front Capri with Waistband (H & J) to the Back Capris (I) at the sides. Please note, the Back (I) should extend above the Front (H & J) by about 3/4-1". This will form the elastic casing.
6. Fold the top of the back pants down using the notches as your guide so wrong-sides are together. Sew close to the finished edge to form elastic casing. Please note, the elastic will only be inserted in the back of the pants.
7. With right-sides together, sew one long edge of the Cuff (K) to the bottom of a capri leg. Then fold and press back 1/8" the bottom of the cuff. With right-sides together, fold the cuff in half lengthwise and **pin** just over the seam. Sew an inverted "V" in the center of the cuff, with the point about 1/4" below the seam where the cuff meets the pants. Carefully cut straight up to the point but do not cut into the point. Turn the cuff right-side out and press. You may need a pin to help pull out the corners of the "V". You may also need to unpick a stitch or two in the center point so the cuff lays flat. Sew along the edge of the capri catching the seam in the back to secure the cuff (K). Repeat for the other leg.

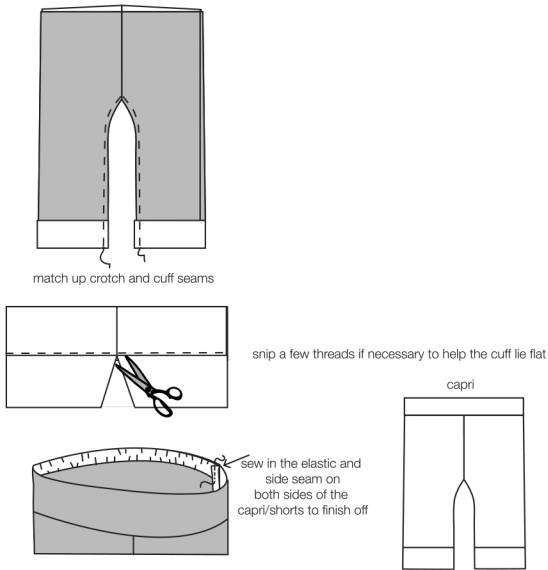


CAPRI INSTRUCTIONS (CONTINUED)

8. With right-sides together, sew the Front (H) to back (I) at the inside leg, matching crotch seams and cuff seams.

9. With the seam pressed toward the back, take a few stitches from the bottom of the cuff up to the seam line. This will help hold the inside seam flat, enabling the pants to hang nicely on the doll.

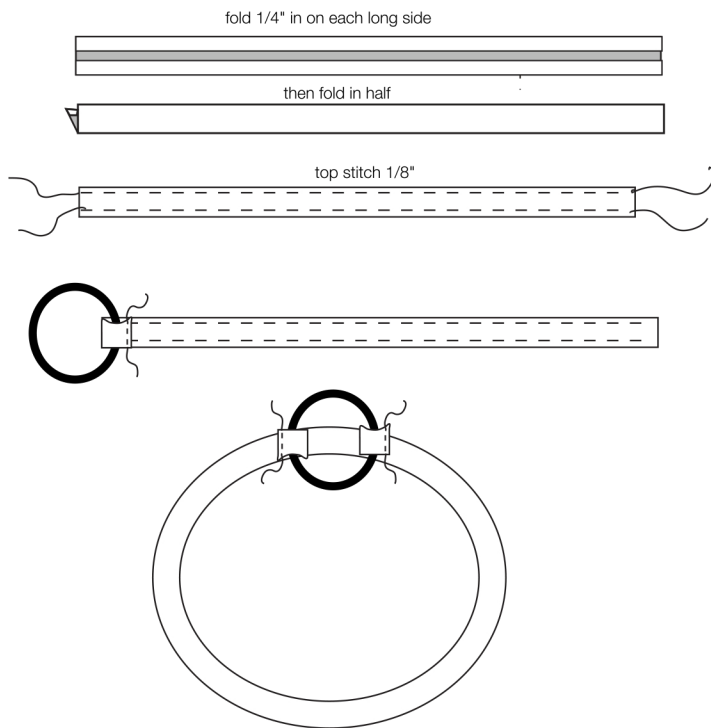
10. Insert a 5" piece of 3/8" elastic into the back casing (I). Use a safety pin to help guide it through. Pin and sew down the elastic into the casing with the side seams also being sewn to finish off the edge.



HEADBAND INSTRUCTIONS

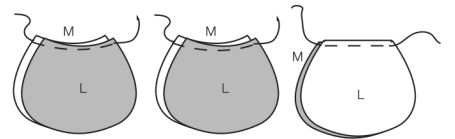
1. Fold 1/4" to the wrong-side of the fabric on each of the long sides of the Headband (P). Then fold the entire Headband in half lengthwise (like making bias tape). Press in place. Top stitch 1/8" along both of the long edges.

2. Use a small hair elastic to connect the headband's raw ends. First fold one raw edge of the headband through the hair elastic so that the elastic is in a fabric loop. Sew the fabric loop shut. Then attach the other raw edge of the headband to the hair elastic by encasing it in a loop. Sew the fabric loop shut.



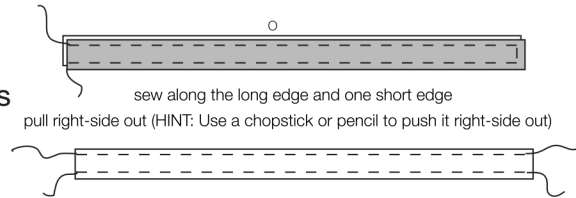
BAG INSTRUCTIONS

1. With right-sides together, sew one Bag Outside (L) to one Bag Lining (M) along the top edge of the bag. Repeat with the second Bag Outside (L) and Bag Lining (M). Turn right-side out and press. Top stitch 1/8" along the edges.



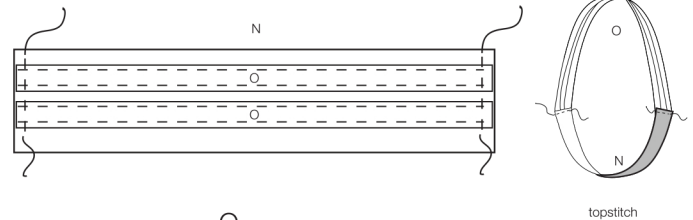
turn right-side out and topstitch

2. With right-sides together, sew along three edges of the Bag Straps (O) leaving a short edge unsewn. Use a chopstick or dowel to turn the strap right-side out. Press and top stitch 1/8" along the long edges.



sew along the long edge and one short edge
pull right-side out (HINT: Use a chopstick or pencil to push it right-side out)

3. With right-sides together, sew the edges of the Bag Bottom (N) and Straps (O) together with the straps centered on the Bag Bottom (N), which will be wider. Then, press the seams towards the Bag Bottom (N) and top stitch into place. This will help the straps stay upright.



topstitch

4. With right-sides together, pin the curved portion of the Bag (L-M) to the Bag Bottom (N) with the Bag Lining facing out. Sew slowly along the curve. Optional: Serge this edge. Then with right-sides together, pin the curved portion of the second Bag piece (L-M) to the unfinished edge of the Bag Bottom (N). Sew into place. Optional: Serge this edge. Turn the bag right-side out to finish.

